

GARD MC

Multiplexer Programming

1. Connect monitor and keyboard to the IPC.
2. Connect the system to the mains.

The entrance menu appears on the monitor (fig.1).

Wait until fig. 2 appears and confirm with [ESC].

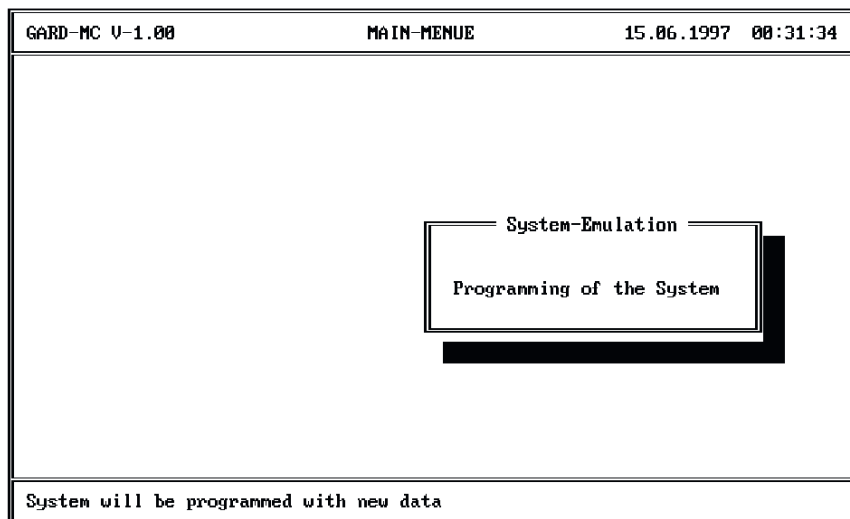


fig. 1

If the programme is started for the first time, there is no need for entering the password as demanded in fig. 3, but only press [ENTER].

In the following mask (fig.4) you can enter a password under the point „*Change password*“ (see below).

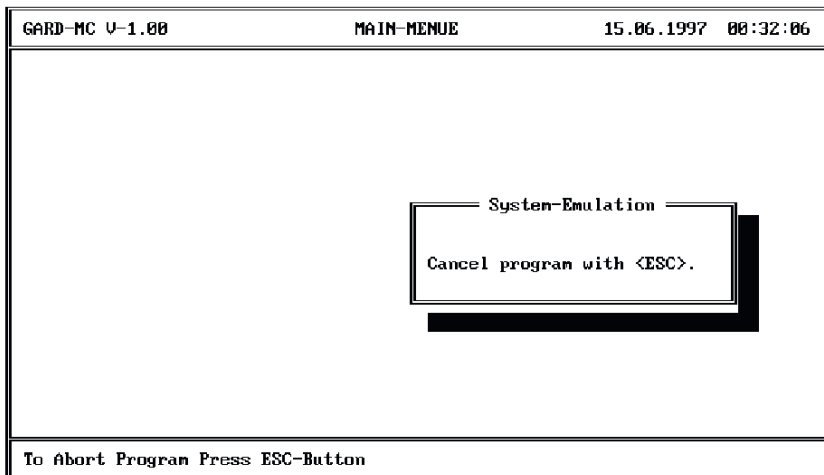


fig. 2

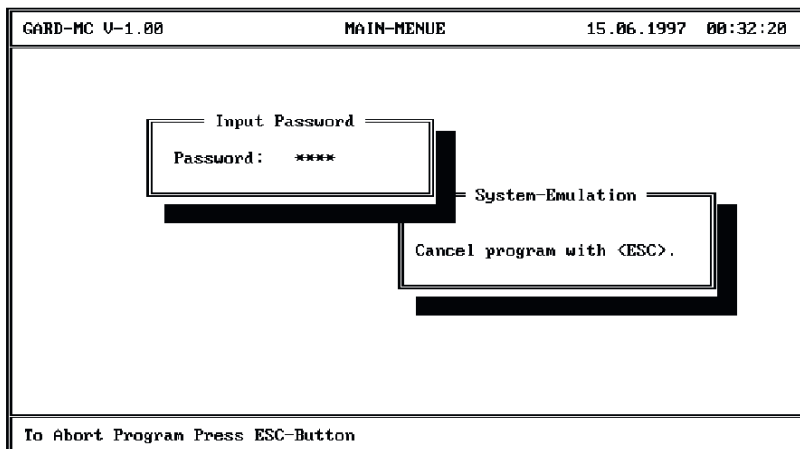


fig. 3

GARD MC V-1.050	MAIN-MENUE	08.04.2002
<p style="text-align: center;">MENUE - SELECTION</p> <p> Editing of components Editing of satellites Editing of group calls Editing of relais Editing of video control Change password Adjust system time System Configuration System RUN </p> <p style="text-align: center;">END OF PROGRAM</p>		
Select Menue with Cursor-Buttons and push ENTER		

fig. 4

3. For system configuration select

Editing of components

and confirm with [ENTER]. The following mask (fig. 5) shows in the left upper corner the group which is now treated (group:01).

GARD MC V-1.041	Editing of components				01.02.2000	12:26:12		
Group: 01								
Nr.	Card-1	Card-2	Card-3	Card-4	Card-5	Card-6	Card-7	Card-8
01	M01
02
03
04
05
06
07
08
09
10
11
12	R01
13
14	S14
15
16	S16
Move-> Cursor Delete-> DEL Edit-> ENTER ESC-> End								

fig. 5

You can select one of the 4 possible groups by pressing [↑] or [↓].
All stations which belong logically together form one (working) group.
Master stations (or main stations) of this group operate as master for the sub-stations.

Within *one* group only *one* main station can operate as “head” station. This configuration is entered in the *Editing of satellites* menu (fig.6). Furthermore the “sub” masters are activated in this menu (see also page 5).

The **Nr** (= No) column indicates the multiplexer terminal number corresponding to the cards of your system.

Enter the call numbers of the connected stations in columns **Card-1** to **Card-8**. Proceed as follows:

Select line and column with the cursor and confirm with [ENTER].
Enter the following:

Master or main station:	Mxx M=Master xx=call number
Substation (door/cell station) :	Sxx S=Substation xx=call number

Only enter substations which have already been connected, otherwise there will be permanent error messages at the master station.

Optional Music: Stations with music receive an additional **M** after their call number, f. ex. **M25M** = Masterstation no. **25** with Music.

Optional radio access: Stations with radio access (master/main stations only) receive an additional **F** after their call number,
f. ex. : **M25F** = Masterstation no.**25** with radio access. This allows master stations to listen to radio communication; the number of persons listening at the same time is not restricted. Pressing the **S key** allows to speak.
The radio transmission modules are also entered with an **F** following their call number, f. ex. : **S97F** = Substation no.**97** **F** = radio
Master stations without radio access can't call the radio transmission module.

Optional Priority: Stations with priority receive an additional **P** after their call number, this means that the respective station is always in first place.

After having entered all stations, leave the mask by pressing [ESC].

If the installation comprises substations, select

Editing of satellites (fig. 6)

in the Main Menu (Abb. 4)

GARD-MC V-1.00		Editing of satellites						15.06.1997 10:16:10	
		Master	delay	Master	delay	Master		Comment	
G1A	1	2	2	5	3			
G1B	
G1B	

GARD-MC V-1.00		Editing of satellites						15.06.1997 10:16:53	
		B-on	B-off	B-on	B-off	B-on	B-off	Comment	
G1A	1	2	2	5	3			
G1B	13:00	14:00	17:00	07:00	
G1B	

GARD-MC V-1.00		Editing of satellites						15.06.1997 10:17:21	
		Master	delay	Master	delay	Master		Comment	
G1A	1	2	2	5	3			
G1B	13:00	14:00	17:00	07:00	
G1B	
G2A	
G2B	
G2B	
G3A	
G3B	
G3B	
G4A	
G4B	
G4B	
<div style="border: 1px solid black; padding: 5px; display: inline-block;"> Edit address New address : 3 </div>									
Move -> Cursor Delete -> DEL Edit -> ENTER ESC -> End F1 -> Help									

fig. 6

The following mask shows 4 sections representing the 4 working groups of the „*Editing of components*“ mask (fig. 5, pages 3 - 4).

In the 1st line of the „**Master**“ column you enter the number of the main station which operates as master station for the substations of this group. Select the respective field with the cursor and confirm with [ENTER], then enter the number of the main station under „*Edit address*“. Confirm again with [ENTER]. The mask is closed and the number is registered.

If a call shall be transferred to another master station after a certain time, enter the transferral time in the “*delay*” column (steps of 10 to 90 sec) as described on the bottom of page 5.

1 = call transfer after 1 - 10 sec

2 = call transfer after 10 - 20 sec

The number of the master station receiving the transferred call is entered in the next column.

This can be repeated once again, i. e. within each group one master station and two „submaster” stations can be determined.

Attention: If no transferral time is entered, the master stations will operate in parallel.

In the second line daily recurrent time limits are entered indicating the master station (line 3) receiving transferred calls.

Proceed as follows:

Select the field as above with the cursor and confirm with [ENTER].

Enter the beginning of the call transfer under column **B-on** and the end of the call transfer under column **B-off**.

Enter in line 3 the master station(s) to which calls shall be transferred, same procedure as above.

If all data have been entered, leave the menu with [ESC].

If you intend to use this function, a keyboard and a monitor has to be connected to the calculator when the multiplexer is started for the first time which will allow to set the clock of the calculator.

If you want to release a group call or make special announcements to a certain number of stations (groups different from the above mentioned working groups), select

Editing of Group-Calls

in the **Main Menu** (fig.4).

The following mask (fig.7) shows the actual group on the upper left side. Select another group by pressing [↓] [↑]. Enter the call numbers of the master/substations under columns **01-16, 17-32** respectively as described above.

Totally 7 group calls can be created. 8 and 9 are reserved for special functions.

GARD-MC V-1.00		Editing of Group-Calls				15.06.1997 00:33:57
Group-Call: 01						
01-16	17-32	33-48	49-64	65-80	81-96	
M01	
M02	
M03	
...	
...	
...	
...	
...	
...	
...	
...	
...	
...	
...	
...	
...	
...	
...	
...	
...	
...	
...	
Move -> Cursor Delete -> DEL Edit -> ENTER ESC -> End						Nr:01

fig. 7

Select with the cursor in the **Main Menu** (fig. 4)

Editing of Relais

and confirm with [ENTER]. Enter the stations under columns **D01 to D10**, the modes (1, 2 or 3) under column **M**.

- 1 – The relay is activated if a substation calls the master station.
- 2 – The relay is activated if a sub and a master station are communicating and the master additionally activates the “S” key.
- 3 – The relay is activated if a master station calls a substation.
- 4 – The relay is activated if a substation calls the master station and drops-out after 3 seconds.

GARD-MC V-1.041		Editing of relais-outputs								01.02.2000		08:47:45	
Name: R01													
Out	D01	D02	D03	D04	D05	D06	D07	D08	D09	D10	M		
01	S14	S16	1		
02	S16	1		
03	1		
04	S14	2		
05	S14	3		
06	S16	2		
07	S16	3		
08	1		

fig. 8

Move -> Cursor Delete -> DEL Edit -> ENTER ESC -> End

In the **Main Menu** (fig. 4) you select

Change password

to enter a new password.

GARD-MC V-1.00	MAIN-MENUE	14.06.1997	17:00:03
<div style="text-align: center;"><div style="border: 1px solid black; padding: 5px; display: inline-block;"><div style="border: 1px solid black; padding: 2px; display: inline-block;">Change password</div></div><div style="border: 1px solid black; padding: 5px; display: inline-block; margin-left: 10px;">New password:</div></div> <div style="background-color: black; width: 100px; height: 15px; margin-top: 5px;"></div>			
Select Menue with Cursor-Buttons and push Enter			

fig. 9

A mask as per fig. 9 appears where you enter the password and confirm with [ENTER].

Now you are asked to enter the ***new password*** again and confirm again with [ENTER].

The configuration is now terminated.

All entered parameters of your configuration are stored on flash disc.

Basic System Parameters

GARD-MC Vers: 12.04.2007-0	MAIN-MENUE	23.04.2007	11:55:34
----------------------------	------------	------------	----------

— MENU - Selection —

Editing of components
Editing of satellites
Editing of group-calls
Editing of relais
Editing of video-control
Change password
Adjust system-time
System-Configuration
System-RUN

END of Program

Basic system parameters are entered under „*System-Configuration*“.

GARD-MC Vers: 12.04.2007-0 System-Configuration								23.04.2007	12:00:09
---	--	--	--	--	--	--	--	------------	----------

Cha	MCh	COM	Def_Rep	Sab	Log	AlCl	CTr
2	0	2	1	0	0	0	0

GARD-MC Vers: 12.04.2007-0 System-Configuration							23.04.2007 12:17:40
Cha	MCh	COM	Def_Rep	Sab	Log	AlCl	CTr
1	0	2	1	0	0	0	0

Help Connection-Try-Time

Please put in the number of the
connection-try-time of 2 satellites
in 10-second-steps. (max 9)
0=connection immediately

< OK >

Under „CTr“ you put in the number of the connection-try-time of 2 satellites in 10-second-steps (max 90 sec). Confirm with [ENTER].

0 = connection immediately

1 = connection after 10 sec, otherwise the alarm is cancelled

2 = connection after 20 sec, idem etc..... (max 9 = 90 sec)

GARD-MC Vers: 12.04.2007-0 System-Configuration							23.04.2007 12:23:31
Cha	MCh	COM	Def_Rep	Sab	Log	AlCl	CTr
2	0	2	1	0	0	0	0

Help Channel-Max

Please put in the quantity of the
channels in this system.

< OK >

Under “Cha“ you enter the number of the speech channels connected to the system and confirm with [ENTER].

GARD-MC Vers: 12.04.2007-0 System-Configuration								23.04.2007 12:36:23
Cha	MCh	COM	Def_Rep	Sab	Log	AlCl	CTr	
1	0	2	1	0	0	0	0	

Help Music-Channel

Please put in the channel-number, on which the music in this system runs.

< OK >

Put in the channel number on which the music in this system runs under „**MCh**“ and confirm with [ENTER].

No music = „0“

GARD-MC Vers: 12.04.2007-0 System-Configuration								23.04.2007 12:37:48
Cha	MCh	COM	Def_Rep	Sab	Log	AlCl	CTr	
1	0	2	1	0	0	0	0	

Help COM-Port

Please put in the number of the COM-Port, on which the MUX in this system connected.

< OK >

Under „**COM**“ you put in the number of the COM-Port on which the system is connected. **Standard is „1“.**

This should only be changed in case of modifications at the IPC or if a new PC is connected to the system.

GARD-MC Vers: 12.04.2007-0 System-Configuration								23.04.2007 12:38:49
Cha	MCh	COM	Def_Rep	Sab	Log	AlCl	CTr	
1	0	2	1	0	0	0	0	

Help Defect-Repeat-Time

Please put in the number of the repeat time of any defect device in 10-second-steps. (max 32767)

< OK >

Under „**Def_Rep**“ you put in the number of the repeat time of any defective device in 10-second-steps and confirm with [ENTER].

1 = after 10 sec

2 = after 20 sec etc.

GARD-MC Vers: 12.04.2007-0 System-Configuration								23.04.2007 12:14:06
Cha	MCh	COM	Def_Rep	Sab	Log	AlCl	CTr	
1	0	2	1	0	0	0	0	

Help Sabotage-alarm

0=Sabotage-alarm of device not active
1=Sabotage-alarm of device is active

< OK >

Under „**Sab**“ the sabotage-alarm is activated which must be integrated into the Substation. Confirm with [ENTER].

1 = sabotage alarm is active

GARD-MC Vers: 12.04.2007-0 System-Configuration								23.04.2007 12:40:26
Cha	MCh	COM	Def_Rep	Sab	Log	AlCl	CTr	
1	0	2	1	0	0	0	0	

Help Logfile

0=Logfile is disabled
1=Logfile is enabled

< OK >

Under „**Log**“ it is set down whether all system calls are recorded or not.
Confirm with [ENTER].

0 = disabled; 1 = enabled

GARD-MC Vers: 12.04.2007-0 System-Configuration								23.04.2007 12:41:01
Cha	MCh	COM	Def_Rep	Sab	Log	AlCl	CTr	
1	0	2	1	0	0	0	0	

Help Alarm-Clear automatic

Value between 0 and 24 hours
After that time, alarm
will be cleared automatically.
0=Never clear alarm automatically.

< OK >

A substation's call releases at the master station an alarm signal which is switched off as soon as the operator starts communication.

Under „**AlCl**“ the time is entered after which an alarm is cleared automatically

0 = never clear alarm automatically

Gard-MC LogFile Legend

Letter	Meaning
A	Master - Slave Communication
B	Master - Master Communication
C	End of Communication
D	Group Call
E	Slave Alarm
F	Clear Alarm
G	Forced Communication Master - Slave
H	Forced Communication Master - Master
J	Slave Emergency Alarm
L	Door lock release—Relay on
M	Door lock release—Relay off
S	Communication Master - Slave Emergency Call
X	System Start
Y	Defective Device
Z	Device again in operation

After system restart enter under LogFile (EVENT.NEW):

<X,0,0, 26.02.2007 , 11:22:59>

Files on the compact flash disc

CLARSON.BAT	Start file
CLAR2005.EXE	Programme file (Parameter /e starts the system in editing mode)

PINDATA.DAT	Editing of components
SATDATA.DAT	Editing of satellites
GRUPDATA.DAT	Editing of group-calls
RELDATA.DAT	Editing of relais
GEUTEBR.DAT	Editing of video-control
CONFIG.DAT	System-configuration
EVENT.NEW	LogFile

Network interface:

FTP Hostname: 192.168.1.200

FTP UserID: anonymous

4. In the **Main Menu** (fig.4) you select

System Run

The system is restarted and operates with the new configuration.

List of Subjects

B-on.....	6
B-off.....	6
Call Number.....	4/6
Delay.....	5/6
Editing of Components	3
Editing of Group-Calls.....	6/7
Editing of Relais	7
Editing of Satellites.....	5
END of Programme	8
Password Enter.....	1/8
Password Change	8
Error Message	4
General Call	6
Group Call.....	6/7
LogFile legend	14
Master Station	4/5
Main Menue	3
Main Station.....	4/5/6
Multiplexer.....	4/8
Option <i>Music</i>	4
Option <i>Radio Access</i>	4
Programm Start	1
Restart	14
“Sub Master” Station	4/5
Substation2.....	4
Storage of Parameters	8
System Configuration	3
System Parameters	9-13
System Run	14
Time Limits.....	6
Working Group	4/5/6