

Components of the GN9330e Headset System

PUBLIC III

GN9330e Wireless Headset System

Service and Installation Instructions



Wireless headset system cpl. comprising:
 Base station, headband and earhook
 incl. patch cable 40.054.376

Ref. 40.030.022



Replacement headset

- WITHOUT base station
- WITHOUT wearing accessories -

Ref. 40.030.023



Earhook

Ref. 40.030.024



Headband

Ref. 40.030.025

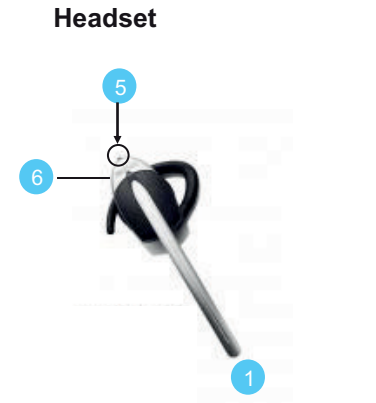
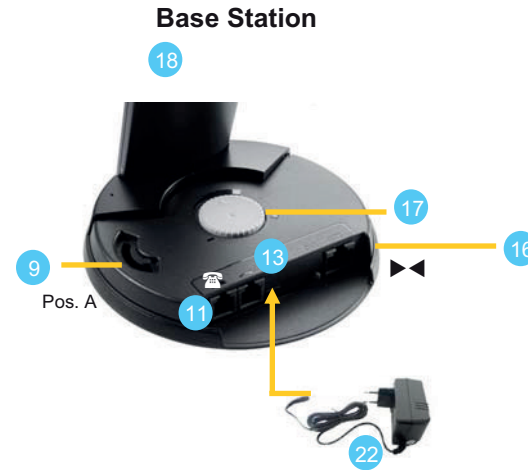
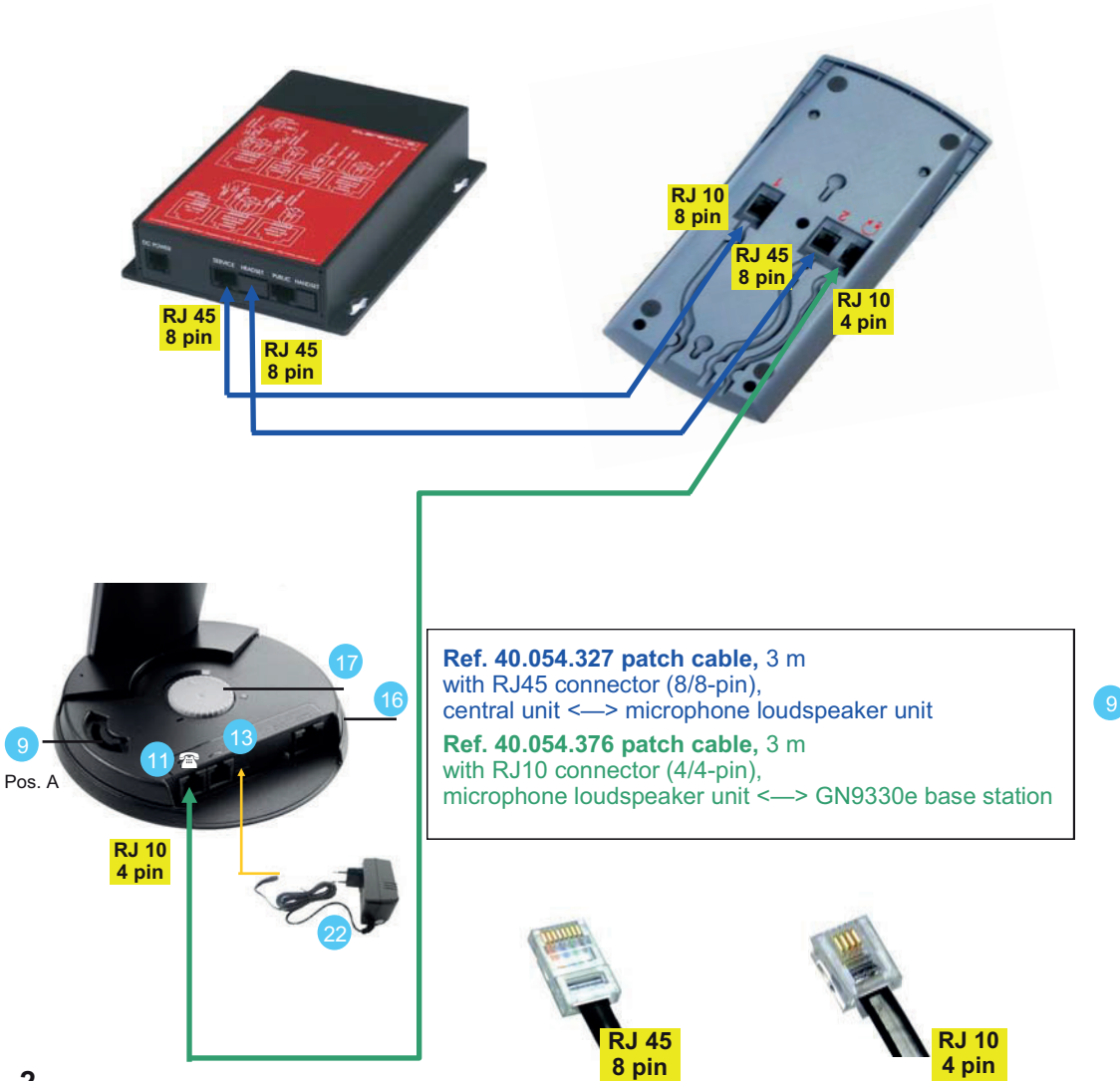


Clarson Apparatebau GmbH
 Zeppelinstr. 4 78083 Dauchingen
 Postfach 11 63 78080 Dauchingen
 Tel.: +49 7720 9956-0
 Fax: +49 7720 9956-22
 Email: clarson@clarson.de
 Internet: <http://www.clarson.de>

Standard Connection of the GN9330e Headset System to the microphone loudspeaker unit PUBLIC III - SERVICE SIDE -

Central Unit
Ref. 40.054.311

Microphone Loudspeaker Unit
Ref. 40.054.301 - bottom side



- 1 Microphone
- 5 Volume control with mute
- 6 Switchover button to headset mode
- 9 Configuration switch to pos. A
- 10 Headset charge facility
- 11 **Connection to PUBLIC III central unit 40.054.311 (to microphone loudspeaker unit 40.054.301 respectively), pages 2/3/4**
- 13 A/C power adapter port
- 16 Pairing button ▶◀
- 17 Microphone volume
- 18 Base station
- 22 Power supply adapter



Wireless headset
Ref. 40.030.022

Pairing of one/several Headset(s) to the GN9330e Base Station

If **one** of **more** additional headsets shall be operated from one GN9330e base station, they need to be paired as follows:

Important:

Make sure that the connection between primary headset and base station is established.

Push the headset's speech button **6**.

The base's Telephone and USB mode indicators should not flash.

A secondary headset is paired as follows:

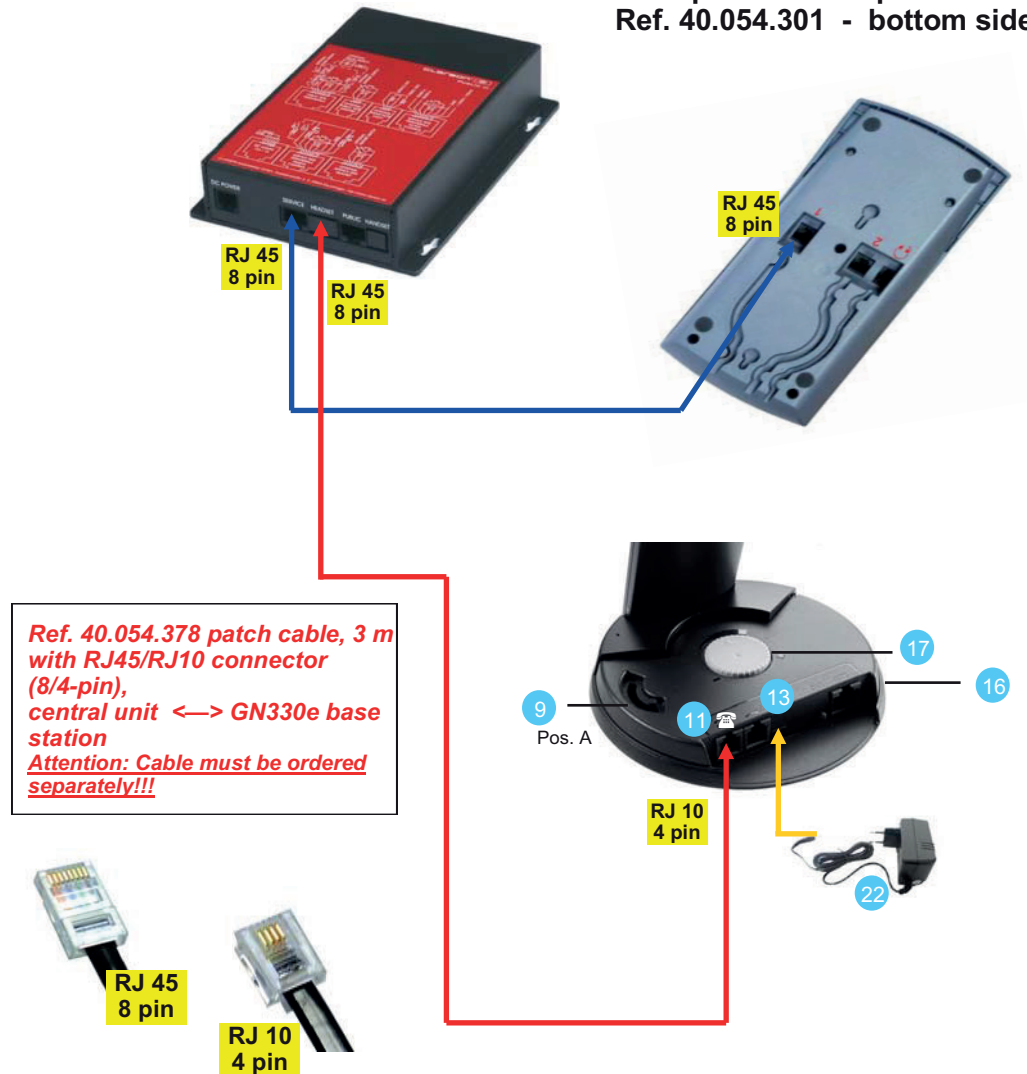
1. Place secondary headset in primary headset's base **10**
2. Push pairing button **16** at the base station. Primary base's telephone and USB mode indicators and secondary headset's link indicator will light for 2 seconds. This means that the secondary headset has been paired successfully (see also page 16 of the GN9330e user manual)



Optional Connection of the GN9330e Headset System to the Central Unit PUBLIC III - SERVICE SIDE -

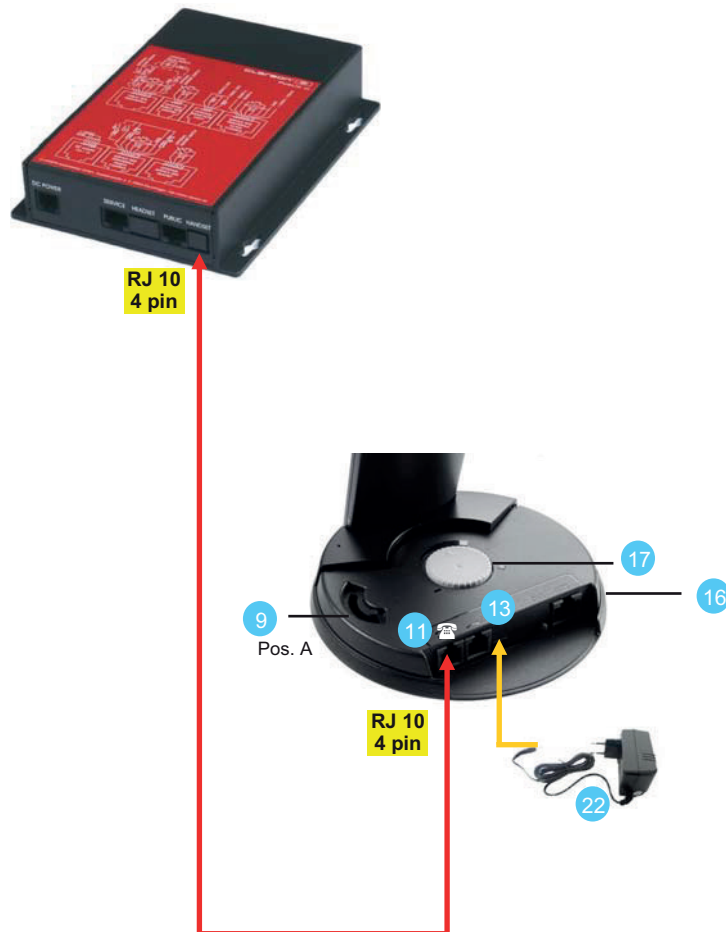
Central Unit
Ref. 40.054.311

Microphone Loudspeaker Unit
Ref. 40.054.301 - bottom side



**Standard Connection of the GN9330e Headset System
to the Central Unit PUBLIC III
- PUBLIC SIDE -**

Central Unit
Ref. 40.054.311



Operating Instructions

1. **Factory Settings at the GN9330e Base Station:**
Speech volume 17 on approx. 1 o'clock
Configuration dial 9 on „A“
2. Link socket 11 of the headset's base station with headset interface of the **PUBLIC III** microphone loudspeaker unit (patch cable 40.054.376)
or
directly with the **PUBLIC III** headset socket of the central unit (patch cable 40.054.378)
3. Connect power supply 22 to base station socket 13.
4. Switch on the **PUBLIC III** microphone loudspeaker unit (button 1).
5. Remove headset from base station or push button 6:
 - LED above button 1 of the microphone loudspeaker unit flashes
 - headset is activated
6. Back to standard operating mode:
 - Insert headset into base station 10 or push button 6.
 - Switch the **PUBLIC III** microphone loudspeaker unit off and on again (button 1).
7. For all other functions please refer to the **PUBLIC III** service and installation instructions as well as to the **GN9330e** user manual.